



THE CONSTRUCTION STORE

2019 CATALOGUE



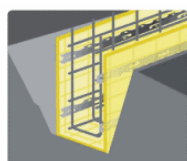
1300 763 288
www.constore.com.au

FORMING

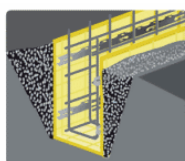
Forming encompasses all products associated with forming up concrete structures such as Pecafil Sacrificial Formwork, Stremaform Formwork Elements, Composite Column Tubes, Timber, Polystyrene & Cardboard Void Forming products.



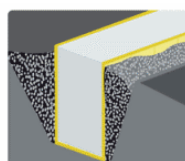
PECAFIL SACRIFICIAL FORMWORK



1 Placement des armatures et les distanciers en plastic profil type A



2 Remblayer autour du Pecafil®



3 Couler le béton



PECAFIL® SACRIFICIAL FORMWORK

The Pecafil sacrificial formwork is a cost effective, permanent formwork for the construction of ground beams, semi-raft foundations, box-out shutters, floor-edge forms, pile caps and bases. It can be used as a separation material between the concrete face and steel sheet piles or contiguous concrete piles, and can also be adapted for use as weather, dust and privacy protection screens.

PRODUCT CODE	DESCRIPTION
FWK006	Pecafil flat sheet - 600mm x 2250mm (1.35 sq.m)
FWK007	Pecafil flat sheet - 900mm x 2250mm (2.025 sq.m)
FWK003	Pecafil flat sheet - 1200mm x 2250mm (2.7 sq.m)
FWK004	Pecafil flat sheet - 1500mm x 2250mm (3.375 sq.m)
FWK005	Pecafil flat sheet - 1800mm x 2250mm (4.05 sq.m)



Stremaform® formwork elements for working joints divide large structural components into individual concreting sections. The prefabricated elements are used as permanent formwork in floor slabs, ceilings and walls. Stremaform® formwork guarantees a rough surface. Shear forces are transmitted via this working joint. The formwork lies between the continuous reinforcement layers so that there is no need to interrupt the reinforcement.

PRODUCT CODE	DESCRIPTION
FWK012	STREMAFORM - Standard 400mm x 2400mm
FWK014	STREMAFORM - Standard 1000mm x 2400mm
FWK013	STREMAFORM - Custom

****Please contact TCS representative for other sizes and Custom Profiles**

COLUMN TUBE - COMPOSITE



Composite tubing for concrete columns provide a light weight for ease of handling, waterproof for weather resistance, easy to cut to length, easy to strip alternative to conventional column forms. They are available in standard spiral tube or smooth lined to produce a smooth concrete finish.

PRODUCT CODE	DESCRIPTION
COL021	Plain Spiral Tubes - 300mm diameter x 2000mm long
COL008	Plain Spiral Tubes - 300mm diameter x 2400mm long
COL013	Plain Spiral Tubes - 400mm diameter x 2000mm long
COL004	Plain Spiral Tubes - 400mm diameter x 2400mm long
COL016	Plain Spiral Tubes - 400mm diameter x 2700mm long
COL010	Plain Spiral Tubes - 400mm diameter x 3000mm long
COL017	Plain Spiral Tubes - 400mm diameter x 3800mm long
COL005	Plain Spiral Tubes - 400mm diameter x 4300mm long
COL020	Plain Spiral Tubes - 450mm diameter x 2000mm long
COL015	Plain Spiral Tubes - 450mm diameter x 2700mm long
COL023	Plain Spiral Tubes - 450mm diameter x 3000mm long
COL024	Plain Spiral Tubes - 500mm diameter x 2000mm long
COL024-1	Plain Spiral Tubes - 500mm diameter x 3000mm long
COL019	Plain Spiral Tubes - 550mm diameter x 3000mm long
COL046	Plain Spiral Tubes - 600mm diameter x 1600mm long
COL026	Plain Spiral Tubes - 600mm diameter x 2000mm long
COL029	Plain Spiral Tubes - 600mm diameter x 2400mm long
COL001	Plain Spiral Tubes - 600mm diameter x 3000mm long
COL012	Plain Spiral Tubes - 600mm diameter x 3600mm long
COL007	Plain Spiral Tubes - 600mm diameter x 4500mm long
COL011	Plain Spiral Tubes - 800mm diameter x 3600mm long
COL025-2	Plain Spiral Tubes - 900mm diameter x 500mm long
COL031	Plain Spiral Tubes - 900mm diameter x 1000mm long
COL025	Plain Spiral Tubes - 900mm diameter x 3000mm long
COL025-1	Plain Spiral Tubes - 900mm diameter x 3500mm long
COL033	Filament Tape for Column Tubes

****Please contact TCS representative for other sizes and Custom Profiles**

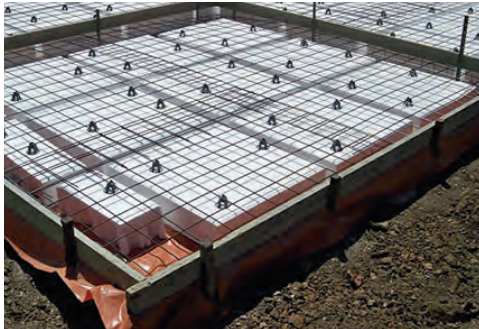
TIMBER



PRODUCT CODE	DESCRIPTION
BUI221-6	EDGEFORM LVL - 100mm x 36mm x 6m length
BUI221-5	EDGEFORM LVL - 150mm x 36mm x 6m length
BUI221-4	TRUFORM LVL - 150mm x 77mm x 6m length
BUI221	TRUFORM LVL - 95mm x 47mm x 6m length
BUI221-7	TRUFORM LVL - 95mm x 65mm x 6m length
BUI221-1	MGP10 PINE FRAMING 90mm x 45mm x 6m
BUI092-2	PLYWOOD CD STRUCTURAL - 2.4m x 1.2m x 15mm
BUI092	PLYWOOD CD 17mm - 1200mm x 2400mm Imp Pina A Bond
BUI092-1	PLYWOOD CPD 18mm - 1200mm x 2400mm Non Structural

****Please contact TCS representative for other sizes and grades**

POLYSTYRENE AND CARDBOARD VOID FORMING PRODUCTS



Our range of void forming products include Solid Polystyrene panels, Waffle Pods, Corrugated Cardboard type panels and Expanded Paper Honeycomb (EPH).

Polystyrene is an extremely versatile product and is a very practical, economic and efficient insulation void forming material which can be applied to all areas of building construction. Standard Waffle Pods and Solid panels are available or custom shapes and sizes can be produced to order from numerous grade densities.



Cardboard type void forms create a space between concrete structures and expansive soils, thereby isolating the concrete from reactive soil, ground movement, mine subsidence, noise and vibration affected sites. The cardboard panel provides a temporary support platform for concrete placement until the structural slab sets and can support itself across drilled piers, pads, intermittent footings or other supporting concrete work. The cardboard material gradually absorbs ground moisture and loses its strength and subsequently disperses after the concrete has set, creating a space into which soil can expand without causing damage to a building.

PRODUCT CODE	DESCRIPTION
POL002	POLYSTYRENE - "H" Grade
POL001	POLYSTYRENE - "L" Grade
POL008	POLYSTYRENE - "M" Grade
POL006	POLYSTYRENE - "S" Grade
POL001-1	POLYSTYRENE - "SL" Grade
POL009	POLYSTYRENE - SOLID 1100 x 1100 x 100mm Thick
POL010	POLYSTYRENE - SOLID 1100 x 1100 x 150mm Thick
POL005	POLYSTYRENE WAFFLE POD - STANDARD
POL011	POLYSTYRENE WAFFLE POD - 1100 x 1100 x 300mm Thick
VOID011	EPH (cardboard) - 20mm thick x 2400mm x 1200mm (2.88 sq.m)
VOID014	EPH (cardboard) - 30mm thick x 2400mm x 1200mm (2.88 sq.m)
VOID003	EPH (cardboard) - 40mm thick x 2400mm x 1200mm (2.88 sq.m)
VOID002	EPH (cardboard) - 50mm thick x 2400mm x 1200mm (2.88 sq.m)

**** Please contact TCS for your specific requirements**

POLYSTYRENE AND CARDBOARD VOID FORMING PRODUCTS

PRODUCT CODE	DESCRIPTION
VOID005	EPH (cardboard) - 75mm thick x 2400mm x 1200mm (2.88 sq.m)
VOID006	EPH (cardboard) - 100mm thick x 2400mm x 1200mm (2.88 sq.m)
VOID012	EPH (cardboard) - 125mm thick x 2400mm x 1200mm (2.88 sq.m)
VOID007	EPH (cardboard) - 150mm thick x 2400mm x 1200mm (2.88 sq.m)
VOID008	EPH (cardboard) - 175mm thick x 2400mm x 1200mm (2.88 sq.m)
VOID013	EPH (cardboard) - 180mm thick x 2400mm x 1200mm (2.88 sq.m)
VOID009	EPH (cardboard) - 200mm thick x 2400mm x 1200mm (2.88 sq.m)
VOID010	100um Plastic Bag - per panel

**** Please contact TCS for your specific requirements**